

# Railway product line service offer

---

BrightLoop Converters  
OEM Manufacturer of Railway power supplies

# BrightLoop Converters



Customized Converters for Advanced, High-Efficiency, High-Power density Applications in Harsh Environments

Established in 2010, BrightLoop Converters is an industrial company designing and producing power electronics systems

In 2014, BrightLoop Converters has taken over the former activity of Alcatel Converters / Harmer & Simmons / AEG Power Solutions in Lannion



2 Sites of R&D and Industrial Operations



Employees

35

(75 % of engineers and technicians )



Certification and standards

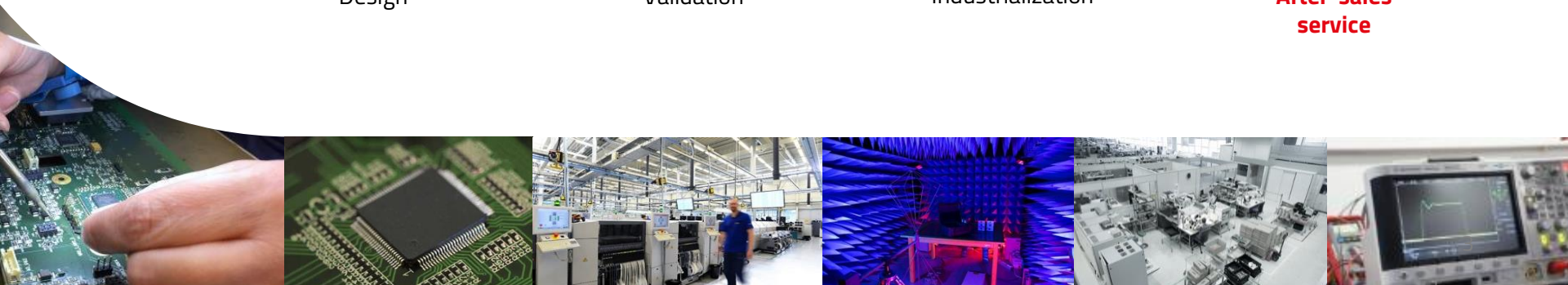
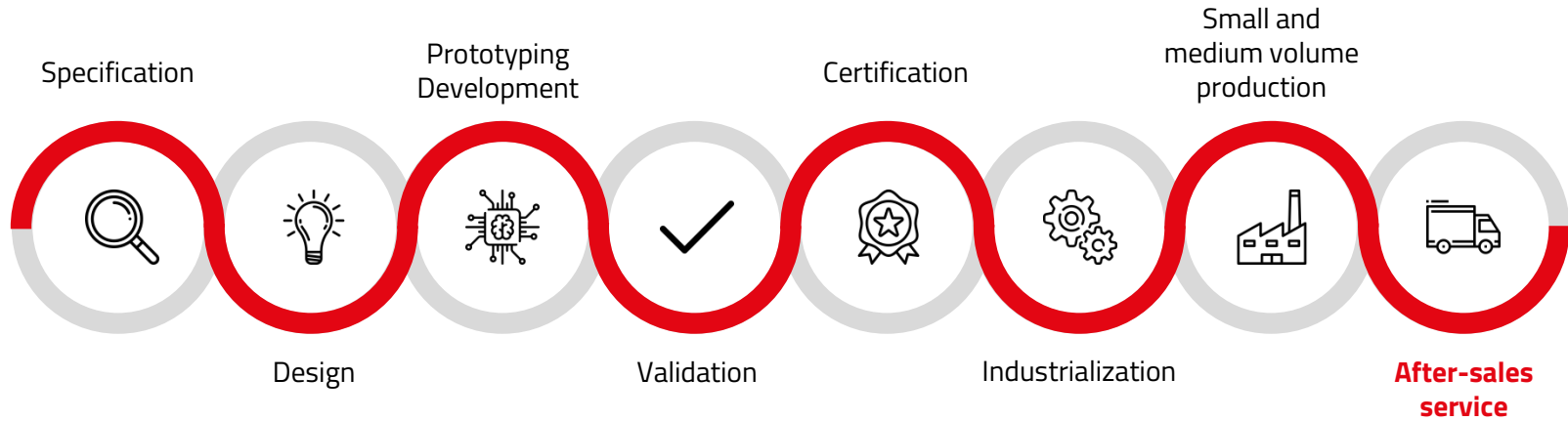
EN60950 and EN60601 (medical)  
DO160 (aeronautics)  
EN61010 (industrial devices)  
EN50155 (railway)  
MIL STD et AECTP (defense)

ISO 9001  
EN 9100  
BUREAU VERITAS  
Certification



# Product lifecycle

Brightloop Converters innovates in power electronics from design to mass production



# Maintenance for Railway Market

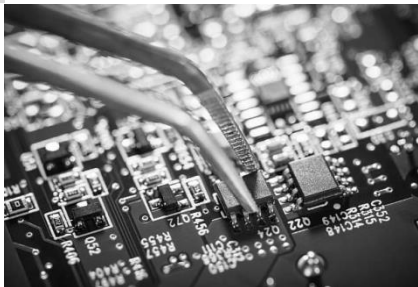
The railway power supplies product line is originated from Alcatel Converters portfolio. BrightLoop Converters is committed to offer **after sales services, preventive maintenance, new product manufacturing, or new product development**, to answer all kind of customer requests.

**Product** repair is provided according to **IPC771 / 21** using the original components, kept in stock on purpose

Repaired or overhauled products are **updated to the latest version index before being returned** to customers

All serviced products are re-tested on **the original, same test equipment than the one used for production**

**~150**  
Product  
References



**BrightLoop Converters is the original designer and manufacturer of its entire catalog**

# Railway Maintenance Catalog

---

Railway products catalog





# AC457

## 80-140W DC/DC Power Supply

**Input :** 48-110V dc

**Output :** +5V , +15V , -15V

**Delivred Product References :**

AC457AA, AC457AB , AC457BA

**Delivred Part Numbers :**

3AW00457AAAA03, 3AW00457AAAA04, 3AW00457AAAA05, 3AW00457AAAA06, 3AW00457AAAA07, 3AW00457AAAA08  
3AW00457AAAB08, 3AW00457AAAB09, 3AW00457ABAA05, 3AW00457ABAA06, 3AW00457ABAA07, 3AW00457ABAB07  
3AW00457ABAB08

**Customers Part numbers :**

TRVS339043001, TRVS339043002, TRVS339043003, TRVC339043002, AL1X



# AC462

## 80-140W DC/DC Power Supply

**Input :** 24 / 36 V dc

**Output :** +5V , +15V , -15V

### **Delivered Product References :**

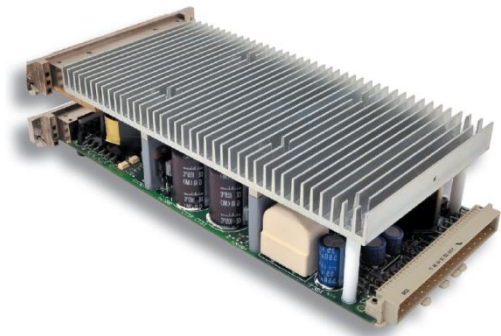
AC462AA

### **Delivered Part Numbers :**

3AW00462AAAA01, 3AW00462AAAA02, 3AW00462AAAA03, 3AW00462AAAA04, 3AW00462AAAA05, 3AW00462AAAA06  
3AW00462AAAA07, 3AW00462AAAA08, 3AW00462AAAB03, 3AW00462AAAB04, 3AW00462AAAB05, 3AW00462AAAB06

### **Customers Part numbers :**

TRVS339043001 C , TRVS339043001 E , TRVS339043001 B/F, TRVS339043001 C/F, TRVS339043001 F



# AC617

## 80-140W DC/DC Power Supply

**Input :** 77-136V dc

**Output :** +5V , +15V , -15V

### **Delivered Product References :**

AC617AA

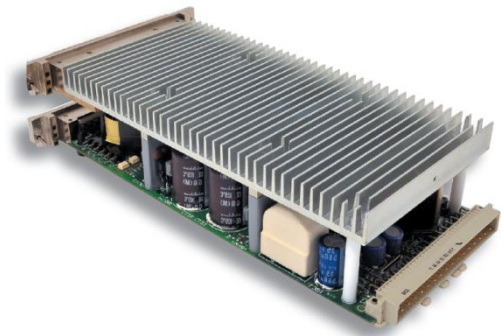
### **Delivered Part Numbers :**

3AW00617AAAA01, 3AW00617AAAA02, 3AW00617AAAA03, 3AW00617AAAA04, 3AW00617AAAA05, 3AW00617AAAA06  
3AW00617AAAA07

### **Customers Part Numbers :**

TRVS339276001, TRVS339276001 A, TRVS339276001 B, ALNU 24V





# AC618

## 80-140W DC/DC Power Supply

**Input :** 77-136V dc

**Output :** +5V , +15V , -15V, +3.3V

### **Delivered Product References :**

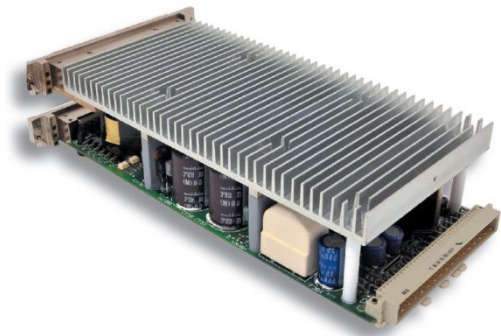
AC618AA, AC618AB

### **Delivered Part Numbers :**

3AW00618AAAA01, 3AW00618AAAA02, 3AW00618AAAB01, 3AW00618AAAA03, 3AW00618AAAB03, 3AW00618AAAA04, 3AW00618AAAA05, 3AW00618ABAB05, 3AW00618ABAD05, 3AW00618ABAD06, 3AW00618ABAD07, 3AW00618ABAD08

### **Customers Part Numbers :**

TRVS339276002 A1, TRVS339276002 A1, TRVS339276002 A1, TRVS339276002 B, TRVS339276002 B, TRVS339276002 B, TRVS339276002 B, TRVS339276002 A, TRVS339276002 C, TRVS339276002 C, TRVS339276002 D, TRVS339276002 E, TRVS339276002 E, TRVS339666002, TRVC339276002, ALNU-35354



# AC619

## 80-140W DC/DC Power Supply

**Input :** 77-136V dc

**Output :** +24V , -24V

### **Delivred Product References :**

AC619AA

### **Delivred Part Numbers :**

3AW00619AAAA01, 3AW00619AAAA02, 3AW00619AAAA03, 3AW00619AAAA04, 3AW00619AAAA05, 3AW00619AAAA06  
3AW00619AAAA07

### **Customers Part Numbers :**

TRVS339275001, TRVS339275001 A, TRVS339275001 B, ALCA 24V



# AC620

## 80-140W DC/DC Power Supply

**Input :** 77-136V dc

**Output :** +24V , -24V

### **Delivered Product References :**

AC620AA

### **Delivered Part Numbers :**

3AW00620AAAA01, 3AW00620AAAA02, 3AW00620AAAB02, 3AW00620AAAB03, 3AW00620AAAB04, 3AW00620AAAB05  
3AW00620AAAC03, 3AW00620AAAC05

### **Customers Part Numbers :**

TRVS339275002, TRVS339275002 A, TRVS339275002 A1, TRVS339275002 A2, TRVS339275002 B, TRVS339275002 C,  
TRVS339275002 D, TRVC339275002, ALCA-35352



# AC774

## DC/DC Power Supply

Input : 77-136V dc

Output : +5V, +12V , +24V



### Delivred Product References :

AC774AA, AC774AB

### Delivred Part Numbers :

3AW00774AAAA03, 3AW00774AAAA04, 3AW00774AAAA05, 3AW00774AAAA06, 3AW00774AAAA07, 3AW00774AAAB06  
3AW00774AAAC05, 3AW00774AAAC06, 3AW00774AAAD06, 3AW00774AAAD07, 3AW00774AAAD08, 3AW00774AABC05  
3AW00774AABD08, 3AW00774AABD09, 3AW00774AABD10, 3AW00774AABD11, 3AW00774AABD12, 3AW00774AABD13  
3AW00774ABAA05, 3AW00774ABAA06, 3AW00774ABAB06, 3AW00774ABAC06, 3AW00774ABAD06, 3AW00774ABAD07  
3AW00774ABAD08, 3AW00774ABBC06, 3AW00774ABBD08, 3AW00774ABBD09, 3AW00774ABBD10, 3AW00774ABBD11  
3AW00774ABBD12, 3AW00774ABBC06, 3AW00774ABBC05, 3AW00774ABBD08, 3AW00774ABBD09, 3AW00774ABBD10  
3AW00774ABBD11, 3AW00774ABBD12

### Customers Part Numbers :

TRVC070817000, TRVC070817000 A, TRVC070817000 B, TRVC070817000 C, TRVC070817000 D, TRVC070848000 A,  
TRVC070848000 B, TRVC070848000 C, TRVC070848000 D, TRVS339327010, TRVS339327011, ALM-1436, TRK6650028000



# AC775

## DC/DC Power Supply

**Input :** 77-136V dc

**Output :** +5V, +5V, +12V , -12V

### **Delivred Product References :**

AC775AA, AC775AB

### **Delivred Part Numbers :**

3AW00775AAAA07, 3AW00775AAAA08, 3AW00775AAAB08, 3AW00775AAAC08, 3AW00775AAAD08, 3AW00775AAAE08  
3AW00775AAAF08, 3AW00775AAAE09, 3AW00775AAAF09, 3AW00775AAAE10, 3AW00775AAAF10, 3AW00775AABE10  
3AW00775AABF10, 3AW00775AABF11, 3AW00775AABD05, 3AW00775AABD06, 3AW00775AABF12, 3AW00775AABF13  
3AW00775AABF14, 3AW00775ABB08, 3AW00775ABBF10, 3AW00775ABBF11, 3AW00775ABBF12, 3AW00775ABBF13

### **Customers Part Numbers :**

TRVC070818000, TRVC070818000 A, TRVC070818000 A, TRVC070818000 A, TRVC070818000 A, TRVC070818000 A,  
TRVC070818000 A, TRVS339328010, TRVS339328011, 10-5238 109, 5172088 F G H I J K, 93-4-6 02 5673, ALV-1437,  
TRK6650027000



# AS1276

## 400W AC/DC Power Supply

**Input :** 230Vrms and 290Vdc

**Output :** 48Vdc – 56Vdc

### **Delivred Product References :**

AS1276AA

### **Delivred Part Numbers :**

3AW01276AAAA01, 3AW01276AAAA02, 3AW01276AAAB02, 3AW01276AAAB03, 3AW01276AAAA04

### **Customers Part Numbers :**

DTR0000288741 A, DTR0000288741 B, DTR0000288741 C, DTR0000288741 C, DTR0000288741 D



# AI1297

## 255W AC/AC Inverter

**Input :** 230Vrms and 290Vdc

**Output :** 50- 156Vrms

**Delivred Product References :**

AI1297AA

**Delivred Part Numbers :**

3AW01297AAAA01, 3AW01297AAAA02

**Customers Part Numbers :**

DTR0000289109 A, DTR0000289109 B



# AS1314

## 200W AC/DC Power Supply

**Input :** 230Vrms and 290Vdc

**Output :** 24Vdc – 28Vdc

### **Delivred Product References :**

AS1314AA

### **Delivred Part Numbers :**

3AW01314AAAA01, 3AW01314AAAA02, 3AW01314AAAB02, 3AW01314AAAB03

### **Customers Part Numbers :**

DTR0000289099 A, DTR0000289099 B





# AS1315

**200W AC/DC Power Supply**

**Input : 230Vrms and 290Vdc**

**Output : 144Vdc – 154Vdc**

**Delivred Product References :**

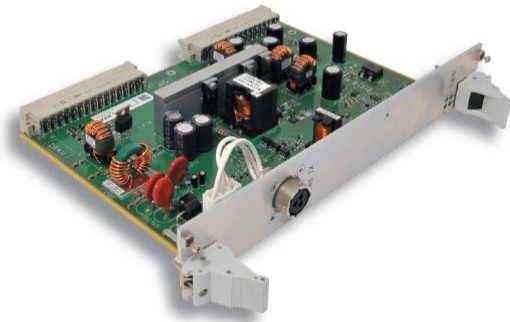
AS1315AA

**Delivred Part Numbers :**

3AW01315AAAA01, 3AW01315AAAB01, 3AW01315AAAB02, 3AW01315AAAA03

**Customers Part Numbers :**

DTR0000289101 A, DTR0000289101 B, DTR0000289101 C



# AC1321

## 120W DC/DC Power Supply

**Input :** 110V (77V – 136V)

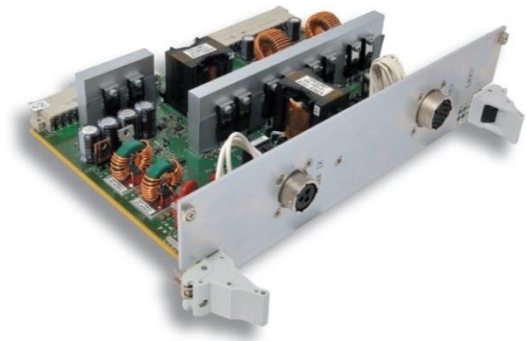
**Output :** +5V , +15V, -15V

**Delivred Product References :**

AC1321AA

**Delivred Part Numbers :**

3AW01321AA



# AC1322

## 360W DC/DC Power Supply

**Input :** 110V (77V – 136V)

**Output :** +24V, +24V, -24V

**Delivred Product References :**

AC1322AA

**Delivred Part Numbers :**

3AW01322AA



# AC1417

## DC/DC Power Supply

**Input : 8V / 12V / 24V**

**Output : +24Vdc , +24Vdc**

**Delivred Product References :**

AC1417AB, AC1417AA

**Delivred Part Numbers :**

3AW01417AAAA01, 3AW01417ABAA01

**Customers Part Numbers :**

DTR0000427629, DTR0000448013, MIPS8\_24, MIPS8-24, 7 954 5916



## **BrightLoop converters**

221 boulevard Davout  
75020 PARIS  
Tél. +33 (0)1 83 62 63 59

**[www.brightloop.fr](http://www.brightloop.fr)**

